

Mid-Georgia Cattlemen's Association

USPS 080-170

BULL SHEET

VOL. LVII

MARCH - APRIL, 2022

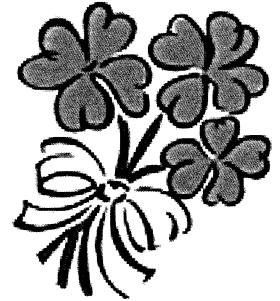
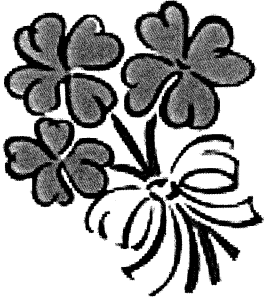
No. 2

MARCH MGCA MEMBERSHIP MEETING

Thursday, March 10, 2022

Christ Chapel - Hwy 19 S of Zebulon

(Across from Pike Schools)



PROGRAM: Dr. Francine Henry - Assistant Professor - UGA Beef Extension Specialist, Tifton will be the speaker. She will be discussing Genomics, Genetically Enhanced EPDs.

SPONSOR: ADM (Ancher-Daniels-Midland Company)
Beau Hatcher, ADM Animal Nutrition will be at the meeting to discuss their products.

MEAL: Beef Brisket Meal catered by Bert Willis

COST: \$10.00 (14 and over) \$5.00 (7-13 years old and 6 and under free)

RSVP DEADLINE: Tuesday, March 8 by Noon @ mgcaonline.com

If you RSVP on time, your name will go in a drawing for a Country Oaks Gift Certificate. Please let us know how many are attending, so there will be plenty of food for all attending.

SPECIAL RECOGNITION

Our Mid-Georgia Showmen will be recognized at the March Meeting.

Attention Ladies: The CattleWomen will have a meeting to discuss the recent GCWA membership changes and plan upcoming events. Please make plans to attend.

MGCA and MGCW Members to Lead Associations

Rodney Hilley was elected at the 2022 Convention to serve as the 2022 GCA President.

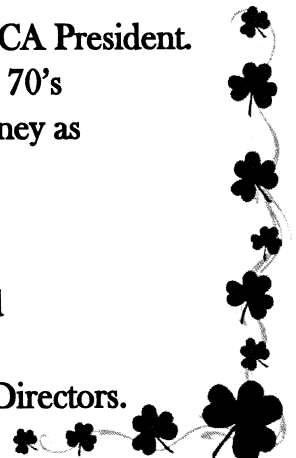
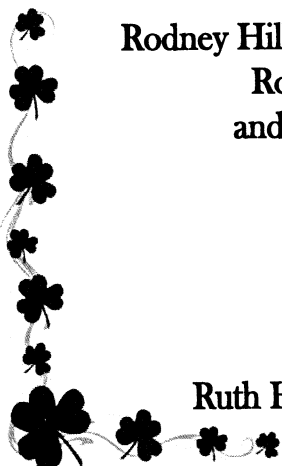
Rodney has been active in the Mid-Georgia association since the 70's and has helped build this association. Please help us support Rodney as he represents us and the Georgia Beef Industry.

James Vaughn was elected to serve as GCA Vice President.

Danny Bentley will serve as Region 8 Vice President.

Hailey Partain was elected 2022 GCWA Vice President and appointed to the GCA Executive Board.

Ruth Hice and Cynthia Douglas will serve on the GCWA Board of Directors.





**748 Everee Inn Road
Griffin, GA 30224
770-227-4914**

Your source for all farm, home and garden needs.

Feed ♦ Seed ♦ Livestock and Pet Supplies ♦ Lawn and Garden Supplies ♦ Fencing Supplies
Farm Equipment ♦ Bulk Feed ♦ Bulk Fertilizer ♦ Chemical Applications

Hall of Fame

1994 Dr. Jack Tuttle
1994 Dr. O.E. Sell
1995 Woodrow Bunn
1995 Bob & Betty Nash
1996 Harris Brantley
1997 E. G. "Pete" Copelan
1998 Harvey R. Greene
2000 Betty Copelan
2001 Jim Markham
2002 Edwin D. Foshee, Sr.
2004 Dr. Wilbur Neisler
2005 Wyatt Childs
2006 Harry Waller
2007 Joel Edwards
2008 Ben T. Smith, Sr.
2009 Edward Trice, Sr.
2010 Dr. James King
2011 Fred Greene
2012 Chuck & Norma Sword
2014 Cynthia Douglas
2017 Ed Trice, Jr.
2018 Dr. Jerry Walker
2020 Edwin Foshee, Jr.
2021 Roger and Janet Greuel

County Extension Agents:

Lamar: Hailey Partain - 770-358-5163 E-mail: hpartain@uga.edu
118 Academy Drive, Barnesville, GA 30204
Monroe: 478-994-7014
P. O. Box 70, Forsyth, GA 31029
Pike: Brooklyne Wassel - 770-567-2010 or 678-588-3153
E-mail: brooklyne.wassel@uga.edu
P. O. Box 190, Zebulon, GA 30295
Spalding: Philip Hensley 770-467-4225 E-mail: philip.hensley@uga.edu
P. O. Box 227, Griffin, GA 30224
Talbot: Bobby Solomon and Steve Morgan - 706-665-3230
P. O. Box 127, Talbotton, GA 31827
Upson: Hailey Partain - 706-647-8989 E-mail: hpartain@uga.edu
P. O. Box 86, Thomaston, GA 30286

**We have cattle loans
that pay you!**



apply on-line at www.agsouthfc.com

THE BULL SHEET

Published Bi-monthly by the
MID-GA CATTLEMEN'S ASSOCIATION
Postmaster send address changes to:
Bull Sheet, 1727 Delray Rd., Thomaston, GA 30286
Periodical Postage Paid in Thomaston, GA 30286
USPS 080-170

Membership meetings are held the 2nd Thursdays in
alternate months starting in January.

Directors' meetings are held the 2nd Thursdays in months
alternating with membership meetings.

Editor: Cynthia Douglas
1727 Delray Rd., Thomaston, GA 30286
douglasfarm@windstream.net - 770-550-1070
Annual membership dues for subscription to Bull Sheet.

2022

**Officers and Directors of the
Mid-Georgia Cattlemen's Association**

Bo HuddlestonPresident
Wes SmithVice President
Rodney HilleySecretary
Treasurer

Lamar:	Pike:	Talbot:
Luke Andrews, Chm.	Jonathan Brown, Chm	Omer McCants, Chm.
Clay Allen	Chad Harless	
Ivey Booker	Mike Killingsworth	

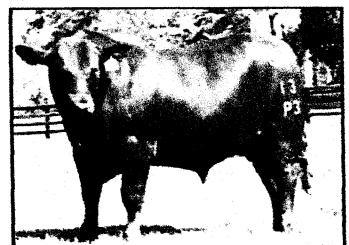
Monroe:	Spalding:	Upson:
Charles Floyd, Chm.	Shane Eason, Chm.	Tracy Boyt, Chm.
Jill Lancaster	Tara Green	Steve Douglas
Clete Sanders	Melisa Fulton	Deborah Ruffin

Past PresidentWill Godowns
EditorCynthia Douglas
Mailing ListGCA Office & Cynthia Douglas
QueenMallory South
Websitemgcaonline.com

*Loans for: operating expenses • cattle purchases • farm/pasture improvements
real estate purchases • equipment purchase/leases...and so much more!*

As a cooperative, Farm Credit distributes profits to member-borrowers. In the past 26 years, AgSouth Farm Credit has distributed more than \$460 Million to our members throughout Georgia & South Carolina. Call today to become part of one of the most successful cooperatives in Georgia.

Thomaston • Greenville • Griffin
888-327-3969





SIDNEY LEE

MEDICAL AND SCIENTIFIC GASES

2247 Hwy. 31
Hampton, GA 30228
770-946-4287

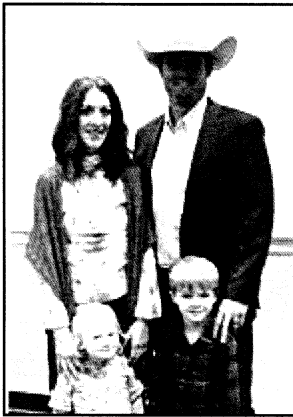
1138 Sigman Rd.
Conyers, GA 30012
770-388-9488

1155 Guy Pain Rd
Macon, GA 31206
478-788-9353

8891 Bright Star Rd.
Douglasville, GA 30134
678-715-6244

3752 Dekalb Technology Pkwy.
Doraville, GA 30340
678-671-2410

PRESIDENT'S REPORT



BO HUDDLESTON
MGCA PRESIDENT

Well, here we are approaching March and warmer weather is just around the corner. As I sit outside writing this article the sunshine is starting to get warm but, the wind is a continuous reminder that we are not out of winter yet. Keeping the cows in mind, we sure do not need to take the warm days and sunshine for granted just yet. Remember to

keep the cows on good grazing or with the best hay and supplement you can provide. This will help ensure they meet the nutritional requirements during this crucial time. I know I can be guilty of seeing a little bit of green starting to "spring" in the pasture and thinking that "they'll be alright, they got some grazing."

Yesterday I returned home from Savannah after attending our GCA Convention. I would like to say Thank You to everyone from MGCA who attended and represented our chapter. Congratulations are in order for Rodney Hilley the incoming GCA President and James Vaughn Vice President. Thank you to both of these men for their continued devotion and service to the organization. Joseph Egloff with Rocking Chair Ranch & MidSouth Packers of Monroe County also deserves recognition as he was named the 2021 GCA Producer of the Year. I am honored to have Mr. Egloff a member of MGCA and to call him a friend. He truly has shown that he is most deserving of holding this title. Hailey Partain, to went home a winner. She claimed the title of Georgia CattleWoman of the year and was appointed to the GCA Executive Committee. For anyone involved in MGCA

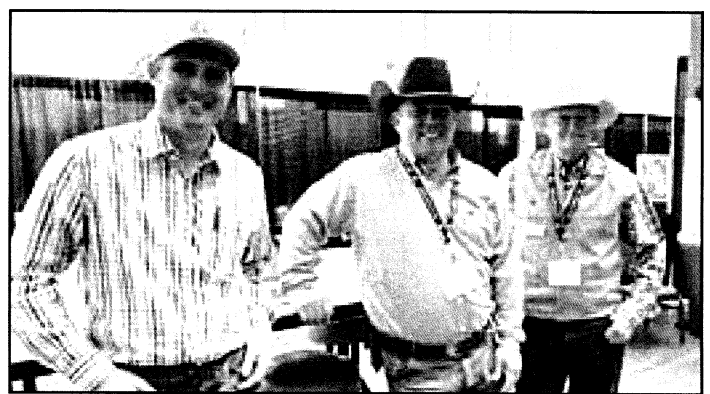
you know what Hailey means to us. It is wonderful to see her passion, devotion and time spent serving the beef producers of this area recognized at the state level.

Thank you to all the businesses and associate members of the GCA who supported our trade show. While walking around and engaging conversations with many vendors I noticed how everyone was there to promote beef production and the cattle business. These companies compete daily for our business across the state. But to see everyone come together, fellowship, and work together in order to promote our way of life and product is something I will always cherish about being a farmer/rancher.

YCC and Junior involvement also seems to be on the rise. The age range of attending cattlemen and women is expanding. For years we were labeled as a group for old white-haired men. But Savannah proved we are engaging many more producers and their involvement is being seen statewide.

I look forward to seeing everyone at our March 10 meeting in Pike County at Christ Chapel. Please remember to RSVP. Thank you for your continued support and involvement with MGCA.

Bo



Enjoying the 60th Convention

OAK HAVEN DIAGNOSTICS

**CATTLE PREGNANCY TESTING
BY BLOOD SAMPLES**

biOPRYN[®]

Phone: 678-591-1144

BARNESVILLE, GEORGIA

E-mail: lab@oakhavendiagnosics.com

Web: www.oakhavendiagnosics.com



COUNTRY OAKS



FARM & HOME SUPPLY

ADM - GODFREY'S - PURINA - SOUTHERN STATES

659 Veteran's Parkway - Barnesville, GA 30204
770-358-1454

INFO@COUNTRYOAKSBARNESVILLE.COM

5967 Highway 41 South - Bolingbroke, GA 31004
478-992-6995

INFO@COUNTRYOAKSFARMANDPET.COM

MID-GEORGIA CATTLEMEN'S ASSOCIATION MEMBERSHIP MEETING

January 13, 2022

Green Gate Farms, Griffin, Georgia

President Bo Huddleston called the meeting to order.

The meeting was held at Green Gate Farms and Stephen Green discussed their operation and gave the invocation.

Bo introduced the sponsors for the meeting, Smith Farm Supply which has 9 locations in Georgia and South Carolina. Catie Jones gave an informative presentation about minerals and forages.

The December minutes were approved as printed in the Bull Sheet.

The Treasurer's Report was approved as written. A laptop and Quicken software have been purchased for the Treasurer's use. Discussion was held about purchasing a new printer. Tracy Boyt motioned, Danny Bentley seconded and the motion was approved to purchase one for \$500.00 or less.

Cattlemen's Report

Cynthia Douglas discussed various activities of the cattlemen including one for the 4-H'ers in Upson County.

The cattlemen are still looking for food banks, etc. in some counties to donate beef to.

Cynthia mentioned that the Mid-GA Queen, Mallory South is present and available for any activities that MGCA has.

Cynthia discussed that the cattlemen will have the concession stand at the steer and heifer show and that help and donations are needed.

The Georgia Cattlemen will have activities at the GCA Convention in Savannah in February.

GCA Report

Danny Bentley stated that GCA membership is now well over 5000 members. He also discussed the activities of the Region VP's. Rodney mentioned that the deadline for early registration is January 15th.

County Agent Reports-

Upson and Lamar Counties- Hailey Partain

Upson County will host a Pesticide Credit course on February 1st and 1 hour of pesticide credit will be given.

Hailey talked about Caitlin Jackson leaving her position in Monroe County and they do not know when her position will be filled.

Spalding County is working on egg candling classes.

Pike County will host the March MGCA meeting and Dr. Francine Henry, UGA will present the program.

New Business

Beth Camp discussed legislation that will be voted on in the General Assembly, particularly the Right to Farm legislation.

Will Godowns discussed the upcoming WCG Steer and Heifer Show and invited everyone to come. The show committee voted to give each Mid-Georgia Showman \$200.00 each.

Old Business

The next Directors' meeting will be February 10th, location to be determined.

The next Membership meeting will be held in Pike County on March 10th.

Minutes taken and submitted by: Rodney Hilley

Approved

**What do you get when you cross a
cow and a duck?**

Milk and quackers



TIMBERLANE FARMS, LLC

Land Cattle Hay

Wildlife Preserve

TF

Carl Lane, M.D.
Owner

1123 Brent Road
Barnesville, GA 30204

Dan McLeod, Manager
770-550-0239

May 2022 MONROE COUNTY H.E.R.D. SALE

Selling Heifers Through Private Treaty Starting May 1

100+ Bred Heifers will sell confirmed safe in calf to calving ease Angus Bulls.

Contact: Phil Ham - HERD Committee Chairman for more information

478-394-1662

MID-GEORGIA CATTLEMEN'S ASSOCIATION DIRECTORS' MEETING

**February 10, 2022
Barnesville, Georgia**

President Bo Huddleston called the meeting to order.

Chad Harless gave the Invocation.

The January minutes were passed out for review and approved as printed.

Cattlemen's Report

Cynthia Douglas reported that they have made donations to the food banks in Spalding and Lamar Counties. Discussion was held about others in the remaining counties.

At the recent steer and heifer show, the cattlemen made \$265.00.

The cattlemen will have an event at the GCA Convention on Wednesday at 5 p.m.

Cynthia stated that there will be a BQA training at the TVS facility on March 15th. Randy Fordham will be speaking and Boehringer Ingleheim is sponsoring.

Discussion was held about the cost versus income of the Bull Sheet.

County Agent Reports-

Pike County - Brooklyn Wassel reported that soil samples tests have gone up. She will be hosting an Animal Skull Preservation training workshop on February 14th and will be hosting a pesticide credits workshop.

She also stated that she needs volunteers and sponsors for the Keep It Clean Spring Fling.

Brooklyn also gave an update on the Fire Ant Spreader.

Upson and Lamar Counties - Hailey Partain

Hailey gave the following updates:

Beef Cattle Short Course in Irwinville on March 1st.

Beef Evaluation Short Course at Upson Livestock on March 2nd and 3rd.

Equipment Safety Day - TBD

Better Beef Systems Extravaganza in Tifton on April 5th.

Lunch and Learns 2nd Monday of every month.

The Georgia Cattlemen will be coming out with a new newsletter at the convention.

3 MGCA show kids will be doing a fitting contest.

GCA Report

Rodney Hilley gave an update on the upcoming GCA Convention to be held in Savannah on February 16-18th.

New Business

The next membership meeting to be held in Pike County will be at Christ Chapel Church on March 10th. It will be sponsored by ADM.

Old Business

Bo update the Board on the status of the scholarship and that 1/2 of the amount was due to the most recent winner.

Wes Smith reported that the tour would be held on March 19th and will visit Honeywood Farms, Walters Farms and Mid-South Packers. Lunch will be on your own. After discussion, it was decided to invite local legislators and MG will pay for their lunch.

Bo reported that the recent Steer and Heifer Show had 28 exhibitors and \$4410.00 was awarded to them. There were 8 Mid-Georgia showmen who were given an additional \$200.00. The 2023 show is scheduled for January 28, with a backup date of February 4th.

Bo discussed the voting delegates from Mid-Georgia for the GCA convention. So far, there are 9 for sure that will be attending the convention.

Clay Allen announced that Honeywood's Heifer Sale is scheduled for April 9th.

Hailey Partain mentioned that they will be having a tour for Ag Agents on May 18th and asked if Mid Georgia would

770-358-3580



JOHN DEERE

1024 Veterans Pkwy. Barnesville

STIHL



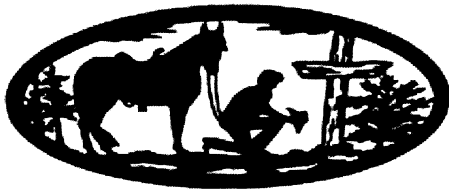
James Ellington - Manager

Chris Estes, Rusty Walters, Ben Carson - Sales Team

SunSouth.com

Josh Horne - Service Manager

Robert James - Parts Manager



JUSTIN'S PLACE RESTAURANT

1441 Hwy 19 North • Thomaston, Georgia 30286
706-646-5171

"To worry about what you can't do, is to waste what you can do."

JUSTIN'S PLACE RESTAURANT & BUNKHOUSE

35 E. Main Street • Butler, Georgia • 478-862-5811

cook lunch at Mid-South Packers. It was agreed that we would do so.

Bo mentioned that Hailey Morelock from FSA had requested to speak at the upcoming March meeting in Pike County and it was determined that we may need to have a separate meeting for that due to questions and time constraints.

Bo mentioned that he is still in the process of trying to find a new Treasurer. Discussion was held and some possibilities were mentioned.

Discussion was held about the need to purchase a case for the new laptop and motion was made, seconded and approved to do so.

The next Membership meeting will be held in Pike County on March 10th.

The next Directors' meeting will be April 14th, location to be determined.

Minutes taken and submitted by: Rodney Hilley

CattleWomen's Report

By Cynthia Douglas, MGCW President

Your chapter and members have been busy over the past several months. We had a quick meeting at the January meeting and discussed distributing \$100 for beef to one organization in each county. Pam Walters contacted a group in Spalding and Susan Allen will take money to Donovan's Dream in Barnesville. Members will work on locating places in other counties and report back.

The West Central GA Show was a cold day, but we survived. Thanks everyone that contributed and a big thanks to Ruth and RM Hice, Tracy Boyt and Carla Smith for

manning and cooking all day. We cleared \$265 that will be used on youth projects.

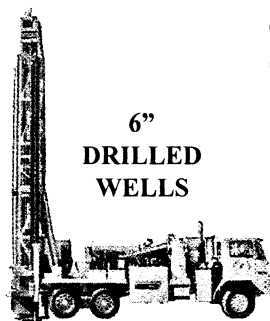
Twenty Upson County 4-H'ers were treated to a cooking class, "I Love Beef", that was sponsored by the MG CattleWomen. Mallory and Macey South spoke about raising cattle, farm life, beef cuts, and beef by-products. Trudy Peek, Hailey Partain, and myself taught and organized the class. Those attending enjoyed cooking and preparing 5 entrees, snacks, or desserts.

Check out the The H.E.R.D. (where Her Educational Recourses are Developed) at georgiacattlewomen.org. This newsletter features 3 Mid-Georgia CattleWomen. The GCWA newsletter will be published quarterly. Thanks Hailey Partain, GCWA Vice-President, for creating this newsletter.

At the GCA Convention in Savannah, the cattlemen voted to give the cattlemen membership into the GCA and voting powers. The GCWA membership dues will be \$35. You will not be getting a separate Cattlemen's Magazine. If you wish to have a magazine, then you will join at \$50 level and mark the form cattlemember. We will have more information in the next issue and on the GCWA and MGCA websites. Your officers encourage you to join the GCWA and visit georgiacattlewomen.com to learn more about the association.

See you in March!

Cynthia



Middle GA Water Systems, Inc.

P.O. Box 949, Zebulon, GA 30295 • 770-567-3400

website: www.middlegawater.com

Here for all your Water Well and Septic System needs!

Residential Wells - Geothermal Wells - Farm Wells

SEPTIC TANKS INSTALLED

MICHAEL SMITH

KEVIN COLWELL



MIDDLE GEORGIA WATER SYSTEMS

Aaron White
864-704-2487
Barn



Anna White
770-713-5045
Office

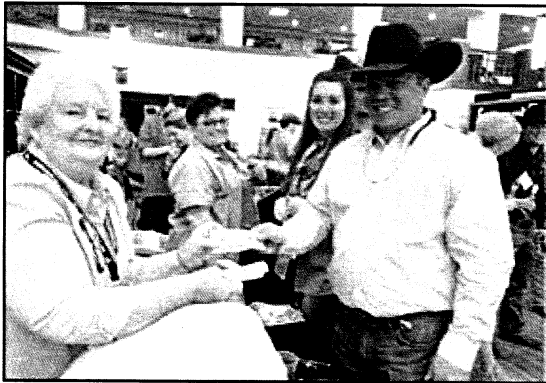
SALE EVERY TUESDAY at 12:00

**Catching and
Hauling Available**

2626 Yatesville HWY E, Thomaston, GA 30286
upsoncountylivestock@gmail.com

**Special Cattle and
Equipment Sales**

Cattle Women on the Moove...
From Shows, Donations, Cooking Class to Convention.



Pike Depot
FEED AND FARM

770.567.8850 | 6325 Hwy 19 S | Zebulon, GA 30295

*Feed, Seed, Gates, Wire, Hay - LYNN DANIELS 706-601-4726 - New feed and farm manager
Plus... Guns, Ammo, Hunting Gear, Hardware, Lawnmowers, Small Engine Repair, Seasonal Plants and MORE!*



From Family Reunions to Church Homecomings to Spectacular Weddings & Unforgettable Events – let us serve you with tents, tables, linens, chairs, lighting, and staging. We do Cow Sales too!!!

Call us today to plan a great memory!

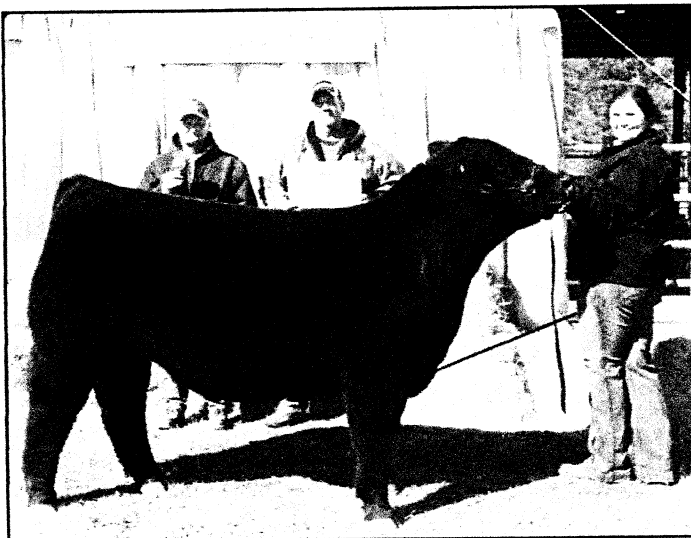
Jeff and Denise Holloway
Brian and Summer Corrigan



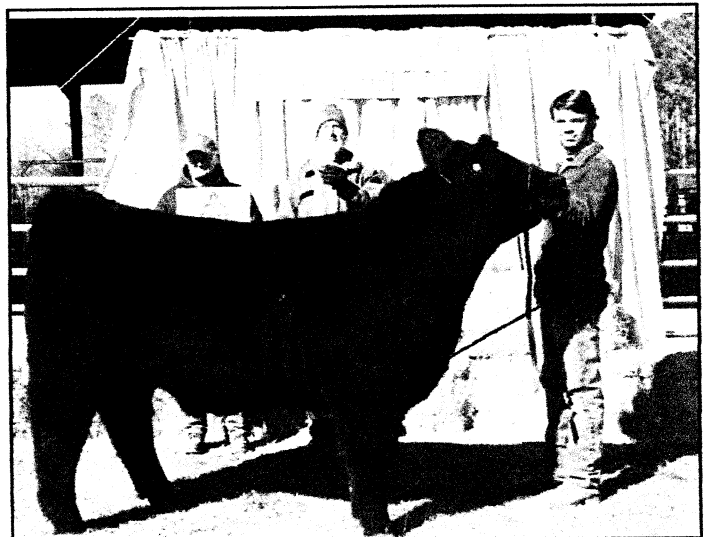
77th West Central Georgia Steer and Heifer Show

The 77th show was held on January 29 at the Chestnut Oaks Arena. Despite the postponement, snow, wind, and freezing temps, 29 exhibitors representing 11 FFA Chapters or 4-H Clubs attended the show. Michael Loughridge of Chatsworth, served as the judge, and he sorted through 38 steers and heifers. With the gracious support of the sponsors, the exhibitors received premiums and awards totaling over \$5000. Our Peewee contestants even got a chance to show off their skills.

A special “thank you” to the cattlemen, cattlemen, agents, advisors, parents, and Pike Agribusiness Authority for helping make this event take place. The show committee appreciates all the businesses and members that made this show happen by you volunteering, contributing your resources, and donating to the show.



Grand Champion Steer
Mykenna Nettles - Perry FFA
\$500 Cash Award- Mid-Georgia Cattlemen
Award - Upson County Farm Bureau
Lew's Boards, LLC



Reserve Champion Steer
Evan Wood - Peach County 4-H
\$300 Cash Award- Mid-Georgia Cattlemen
Award - Monroe County Farm Bureau
Lew's Boards, LLC



Russ Walters
(C) 404-444-0274
walfarms@bellsouth.net

WALTERS FARMS

Hay Equipment - New & Used
Custom Hay/Baleage Production
Quality Round/Square Bermuda Horse Hay
Cow/Calf Round Hay & Baleage
Hay & Wheat Straw by the Semi-load
Farm to Table Premium Beef



@waltersfarmsga
Walters Farms
www.waltersfarmsga.com

EQUIPMENT RENTAL
SMALL ENGINE REPAIR SHOP

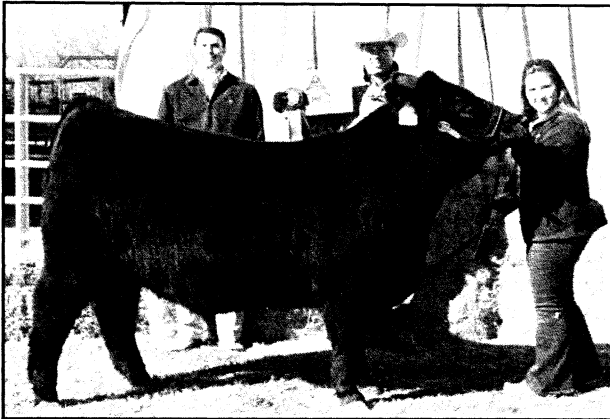


LIVESTOCK & PET FEED
PAINT, ELECTRICAL & PLUMBING



True Value

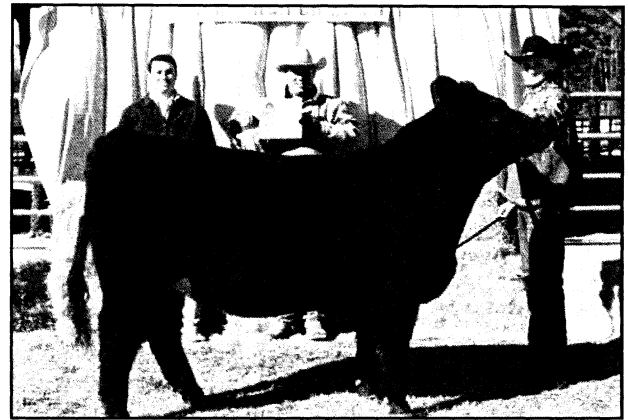
100 LOUIS DRIVE - BARNESVILLE, GA
770-358-1813



Grand Champion Heifer

Gracie Green - Peach County 4-H

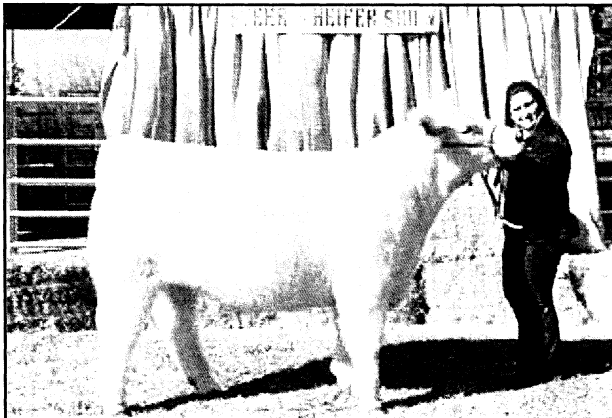
**\$500 Cash Award- Mid-Georgia Cattlemen
Award - Thomaston AgSouth Farm Credit, ACA
Lew's Boards, LLC**



Reserve Champion Heifer

Reed Craig, Ola High FFA

**\$300 Cash Award- Mid-Georgia Cattlemen
Award - United Bank
Lew's Boards, LLC**



Best Homegrown Steer

Gracie Green- Peach County 4-H

**Award - Thompson Veterinary Services
Cash Award - Evergreen Propane**

BREED CHAMPIONS

Commercial Champion

Gracie Green - Peach Co. 4-H

Commercial Reserve Champion

Paislee Garmon - Upson Co. 4-H

British Champion

Paislee Garmon - Upson Co 4-H

Reserve Champion British

Reed Craig - Ola High FFA

Continental Champion

Reed Craig - Ola High FFA



Sleepy Creek farms

Angus Bulls AI Breeding Preg ✓

Cody Ham
Cell: 478-394-1642
cjamesonh@gmail.com

Marketing & Consulting

678 Reedy Creek Road
Forsyth, GA 31029

House Lots • Clearing • Demolition • Grading • Basement • Ponds



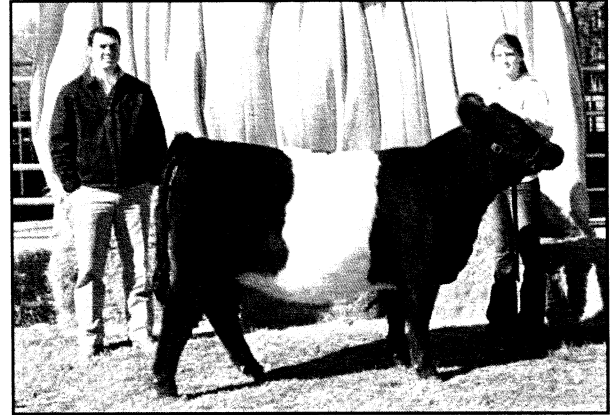
RESIDENTIAL & COMMERCIAL

FREE ESTIMATES

Call Stephen Goodman at
678-588-4435
Concord, Georgia



Best Homegrown Registered Heifer
Paislee Garmon - Upson Co. 4-H
Award - Greuel Family Brangus
Cash Award - Cedar Hill Cattle Company



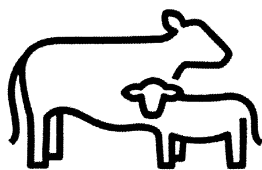
Best Homegrown Commercial Heifer
Paislee Garmon - Upson Co. 4-H
Award - Monroe County Cattlemen
Cash Award - SSS Farm



Best Mid-Georgia Grown Heifer
Paislee Garmon - Upson Co. 4-H
Award - State Representative Beth Camp
Cash Award - Upson County Livestock, LLC
Producer - Cosper Farm



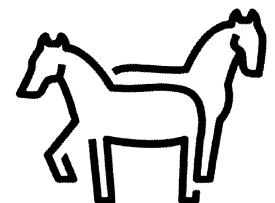
Showmanship Winners: L-R
Peewee Winner - Summer Wheeler - Upson County
Rookie Winner - Mabrey Wheeler - Upson 4-H
Novice Winners - Caiden Aeschlimann - Perry FFA
Junior Winner - Ella Dowd - Perry FFA
Senior Winner - Kamren Yaughn - Peach 4-H
Buckles donated by Forsyth Feed and Seed



zoetis

Tyler Thoreson

Territory Business Manager



115 Saint Croix Drive
Macon, GA 31210

407-902-4712

tyler.thoreson@zoetis.com

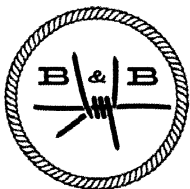
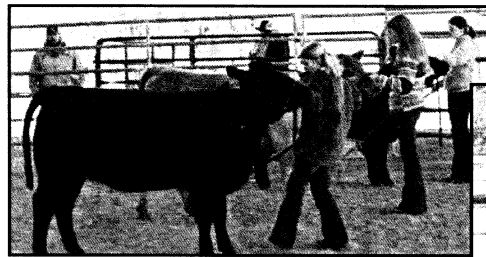
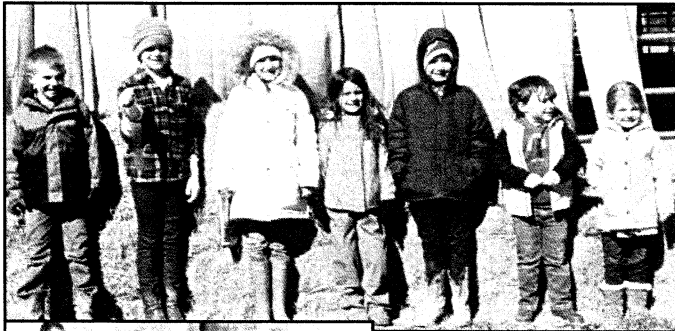
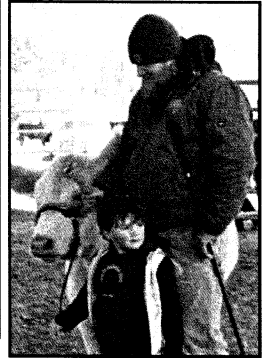
We'll steer you right!

United Bank

www.accessunited.com • 770.358.7211



Scenes From The Show



Feed and Seed, LLC

B & B FEED AND SEED

Zack Pasley Garrett Nordan Ben Carson

833 Spring Creek Rd., Thomaston, Ga 30286
706-647-3615

Hours:
M-F 8:00-5:30
Saturday 8:00-12:00

Tuckers • Cargill • Faithway Alliance • Pennington • Athena Seed •
Southern States • Southern Livestock Supply

JACKSON REGIONAL STOCKYARD

467 Fairfield Road – Jackson, GA 30233

Barry Robinson – Cell 256-453-6123

SALE EVERY WEDNESDAY AT 12:30

Receive cattle - Tues. 9:00am–9:00pm and Wed. 8:00 am.

Feed and water facilities are available at all times.

Hauling Available

BARN: 770-773-7314



William Heard
Cell# 770-584-8004

Brad Reiney
Trevor Hudson

Bag & Bulk ❖ Spreader Truck Service
Nitrogen - Fertilizer - Dolomite Lime - Seed
PO Box 265, Woodbury, GA 30293
706-553-5622 Fax: 706-553-2557

Honeywood Annual Bred Heifer Sale

Saturday, April 9, 2022 – 12:30 pm

Jackson Regional Stockyard

Approximately 100 head

(20 AI and remainder bred to Callaway
and M&M Bulls)

View after 3:00 on Friday

Contacts: Clay Allen 770-468-9777

Barry Robinson – 256-453-6123



Mid-Georgia Cattlemen's Memorial Scholarship

Attention: A \$1000 scholarship is available to graduating seniors and college students who have graduated from the Mid-Georgia Cattlemen's Counties.

Deadline: April 1 @ 5:00
Upson County Extension Office

- Applicant's parent and/or grandparent must have been members of the Mid-Georgia Cattlemen's Association two years prior to applying for the scholarship.
- The parent and/or grandparent of the scholarship recipient must remain as members of the Mid-Georgia Cattlemen's Association while receiving scholarship funds.
- The scholarship is open to all majors at any post-secondary educational institution.
- Recipient must enroll as a full-time student for the 2021-2022 academic calendar year as a successful high school graduate, or received a GED.
- Individuals can only receive scholarship one time, but can apply multiple times until received.

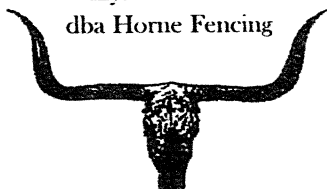
For a form and the complete set of guidelines, go to mgcaonline.com or contact your local Extension Agent.

Congratulations

Vaughn Farms, L.P. was selected as one of seven regional winners of the Environmental Stewardship Award Program during the 2022 Cattle Industry Convention & NCBA Trade Show in Houston, Texas.



Lynn Horne
dba Horne Fencing



Barbwire,
Field Fence

Board Fence,
Catchpens, etc.

CALL FOR A FREE QUOTE
Cell (478) 214-2616

DECK 'EM Pest Service, Inc.

GREGG MARTIN

Owner

626 Piedmont Road • Barnesville, Georgia
770-358-9944





Thompson Veterinary Services
 510 Rose Avenue, Barnesville
 www.thompsonvetservice.com
470-223-VETS
 Dr. Chanda Thompson, DVM

FORSYTH FEED & SEED CO.

45 W. Johnston Street • Forsyth, Georgia 31029

Seminole • Southern States • FRM
 Nutrena • Godfrey • ADM • Mid-South
 Georgia Boots • Lawn, Garden, Seed and Fertilizer
 Insecticides • Farm Supplies • Horse Tack • Wormer
 Fence Supplies • Victor Dog Food

Tel. (478) 994-2991 **DAVID WHITE - Owner**

UGA Extension News

Hailey Partain,
 Lamar/Upson ANR County Extension Agent

The Hot Air Around Methane
 Darren Henry, Ph.D.

It is not difficult to find somebody talking about methane these days. Simply turn on the TV, open your computers to your news affiliate of choice, or log into any social media platform. Everyone has an opinion about methane, and that is one of the main problems: it is an opinion. Over and over, we have been told that methane is a potent greenhouse gas, it contributes to global warming, and since ruminants (i.e., cattle) produce methane, they are destroying the world! I am here to tell you that all of that is true, other than the last bit about destroying the world. On the contrary, cattle have a role in actually cooling the earth's atmosphere.

It is true that cattle produce methane - the average beef cow (whatever that is) can produce between 0.1 to 0.2 lb of methane every day. This is a natural process that allows the animal to control the pH of their rumen by removing hydrogen (an element that impacts acidity). Methane is a very potent greenhouse gas and we do need to do our part as humans to try and reduce the amount of methane produced; however, unlike carbon dioxide (CO₂) which is in the atmosphere for approximately 1000 years, methane only has an atmospheric lifespan of 10 years, after which, methane is converted to CO₂.

The other element that makes up methane is carbon. Let's consider where this carbon is coming from: the diet, whether that be forage, supplement, or a total mixed ration.

For the most part, our cattle are consuming plants, either as forage, grain, or byproducts. Now, let's think back to 5th grade science class and remember how plants are able to grow. Through a process called photosynthesis, plants pull CO₂ from the atmosphere and peel off the oxygen (O₂), and use the carbon to produce energy for plant growth. What this means is that the methane produced from the rumen of cattle is formed from CO₂ that could have previously been methane from the rumen of a grazing beef cow. This is the cycle of Biogenic Methane.

If we consider that the methane produced from the U.S. beef herd is biogenic and that this carbon is consistently being recycled through the system via grasslands and grain, the story we should be hearing is that cattle are not actually a negative source of greenhouse gases, but instead, can actually act as source of carbon sequestration and short-term global cooling. Today, if the global cattle herd does not grow in number of head, the amount of carbon released (i.e., methane) and sequestered (i.e., CO₂ taken into soils and plants) is in balance. This is great news! What is even better news is that if we utilize novel technologies, such as feed additives, we have the opportunity to release less methane, which would lead to short-term cooling.

As a producer, many of us may ask the obvious question, "if we are currently not significantly contributing to global warming with our cows, why would I want to spend more money to reduce methane?" The answer to that is efficiency. When cattle produce methane, they do that at a cost and that cost is energy. Approximately 2-12% of the energy consumed by cattle is lost as methane with cattle consuming forage-based diets producing 3-4 times more methane than their grain-fed counterparts. Therefore, by mitigating the release of methane from ruminants, the opportunity arises for that carbon to go into meat, milk, or

B&B FARM SERVICES

THOMASTON, GA

Custom Hay Cutting & Fencing
 Round Bales — Square Bales
 Hay For Sale

TRACY BOYT
 TIM BOYT

706-656-8481
 706-647-3281

Cattle

Hay

HONEYWOOD

Home-Grown, Grain-Fed Beef

Ed Mitchell, Owner Clay Allen, Manager
 Office: 770-358-2701 Cell: 770-468-9777



CALLAWAY CATTLE COMPANY

Angus & SimAngus

www.callawaycattlecompany.com
callawaycattle@gmail.com

John & Marcia Callaway
2280 Coweta-Heard Road
Hogansville, GA 30230

Home: 770-583-5688
John's Cell: 770-355-2165
Marcia's Cell: 770-355-2166



Central Georgia Wildlife Control, LLC



Predator Control

Specializes in the trapping and removal of nuisance wildlife.

Bryan Rooks
478-973-1838

Melinda Rooks
478-973-2966

Email: centralgawildlife@gmail.com

fiber production.

It is important for us to consider these aspects of methane production. It is easy for many of us to scoff every time we hear someone speak about the methane produced by cattle, but maybe it is time for us to consider that the story we need to be telling is that we have the ability to cool the planet with cattle while saving on our feed bill.

Darren Henry Assistant Professor Department of Animal and Dairy Sciences - Tifton Campus College of Agricultural & Environmental Sciences University of Georgia

Copied: Beef Tips 'n Advice, Brought to you be the UGA Beef Team December 2021.

Better Beef Systems Extravaganza

"A Beef and Forage Field Day"

Event Date: Tuesday, April 5th, 2022 @ 8:00 a.m.

Location: UGA Animal Science Farm, Tifton.

Contact Hailey Partain for info about riding the bus.

<https://beef.caes.uga.edu/programs/better-beef-systems-extravaganza.html>

Sponsored by the Georgia Commodity
Commission for Beef

Grasslands CRP Signup

USDA Farm Service Agency will be holding the Grasslands CRP Signup from April 4th - May 13th, 2022. This is a voluntary program that contracts with producers to protect grassland and pastureland. Producers who currently do not receive funding from CSP or EQIP are eligible to enroll in a 10 to 15-year contract that will maintain hay and grazing lands, while receiving an annual rental payment plus cost-share assistance on fencing and livestock watering facilities. Rental rates start at \$15 per acre. Please contact the Lamar-Henry FSA Office to learn about the eligibility requirements and update your records so you are ready to sign up in April. This is a great program for hay and grazing producers to be paid for activities they are already performing, while ensuring we continue to save grass and pastureland from incoming developments.

Contact: Haley Morelock, County Executive Director
770-358-0787 x 2 haley.morelock@usda.gov

Herd Health and Setting Calves up for Success

We are excited to announce our first client education dinner at Thompson Veterinary Services.

Randy Fordham with Boehringer Ingelheim will be discussing Herd Health and Setting Calves up for Success on March 15, 2022 at 6:00 pm.

Limited space available please RSVP by March 8, 2022
RSVP - 470-223-8887

LOCATION: 510 Rose Ave, Barnesville, GA 30204



Roger, Janet, Richard & Ann
438 Price Rd. • Brooks, GA 30205

Certified Herd No. 262

Phone: 770-719-8118

E-mail: gfrangus@bellsouth.net



Char-No Farm

Registered Brangus Cattle
Black Simmental / Angus Composites

CHUCK & NORMA SWORD

545 Scott Road • Williamson, GA 30292
(770) 227-9241 (770) 468-3486 (Cell)

Hollonville - Highway 362 • 12 Miles West of Griffin
cnffarm@aol.com WWW.CHARNOFARM.COM



Discover the Community Banking Difference!
 We do long term mortgages on Land and Homes!

Ken Chapman
 706-674-2215



Member FDIC www.talbotstatebank.com

SILO SPRINGS WELDING

Arlin Gravelle - 478-960-1137

Mobile Welding Service that will travel to you to fix equipment

Over 20 years of welding and metalworking experience

Call anytime 24/7

Culloden, GA

Southern Rivers Energy

770-358-1383

877-358-1383

1367 Hwy 341 S

Barnesville, GA 30204

www.southernriversenergy.com

ANGUS AND HEREFORD

BULLS

FOR

SALE



Contact Wes Smith

706-648-4210

Specializing in Land, Farms & Residential Real Estate Sales

Your Local Realtor - Member of GCA
Been in Business since 2005

Elena Stanfield

Associate Broker w/Bowers & Burns Real Estate Co.

Cell: 404-379-1206

Email: sellingruralgeorgia@gmail.com

Website: southernlistings.com



MEMBERSHIP APPLICATION

Georgia Cattlemen's Association

P. O. Box 27990 • Macon, GA 31221

(912) 474-6560

gca@gabeef.org

RENEWAL

NEW MEMBER

Name _____

Address _____

City _____ State _____ Zip _____

Phone _____

E-mail _____

County/Chapter _____

Sponsored by _____

GCA Dues

State & Local Dues - 1 yr. \$ 50.00

Total. \$ _____

Georgia Cattlewomen's Dues

State Dues - 1 yr. \$ 15.00

Total. \$ _____

Mid-Georgia was well represented at the convention.



Left to Right:

Danny Bentley – 2021 Top Membership Recruiter

Hailey Partain – 2021 CattleWoman of the Year

Joseph Egloff owner of Rocking Chair Ranch and

MidSouth Packers – 2021 Producer of the Year

Upcoming Events

- March 8 **RSVP MGCA Meeting**
noon @ mgcaonline.com
- March 10 **MGCA Membership Meeting**
7:00 pm - Christ Chapel – Zebulon
- March 14 **RSVP – MGCA Beef Tour**
mgcaonline.com
Wes Smith - 706-648-4210.
- March 15 **Herd Health Program**
6:00 Thompson Vet Office
510 Rose Ave, Barnesville
RSVP - TVS by March 8
- March 19 **Mid-Georgia Beef Tour**
Upson Extension Office -8:30
- April 1 **MGCA Scholarship Deadline**
5:00 pm Upson Extension Office
- April 5 **Better Beef Systems Extravaganza**
Tifton 8:00 am
- April 9 **Honeywood Bred Heifer Sale**
Jackson Regional Stockyard
12:30 pm Lunch will be available
- April 14 **MGCA Directors' Meeting**
Thompson Vet Office
7:00 pm



-COPIED

“Andrew, the cows have come home.”

MID-GEORGIA BEEF TOUR *Get on Board!*

Mid-Georgia Cattlemen and Cattlewomen will have a tour Saturday, March 19, 2022. The group will meet at the Upson County Extension Office at 8:30AM. The address is 305 South Hightower, Thomaston.

1st Stop - Honeywood Farms in Barnesville - They background and raise bred heifers to sell each year and they feed out some steers to sell.

2nd Stop - Walters Farms in Barnesville - This operation backgrounds calves and feeds out steers.
Lunch will be on your own in Forsyth.

3rd Stop - MidSouth Packers - Tour their meat processing plant. Arrive back to Upson Extension office about 3:30.
Register on the website at mgcaonline.com or call 706-648-4210 by Monday, March 14th.

If you have any questions, contact Wes at 706-648-4210.

BULL SHEET

of the

Mid-Georgia Cattlemen's Association, INC.
1727 Delray Rd., Thomaston, GA 30286

Periodicals
Postage
PAID
Thomaston, GA
USPS 080-170